

NEW JERSEY AGRICULTURE STATISTICS

9,900

farms

750,000

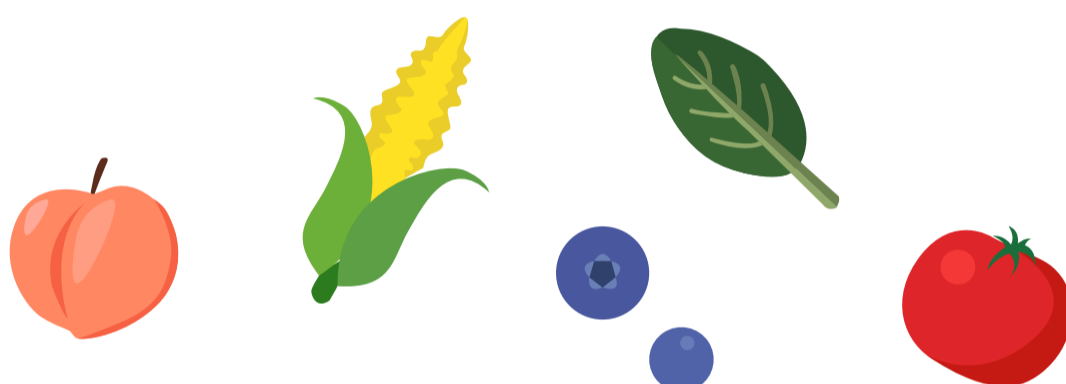
acres of farming

233,751

acres of preserved farmland

\$1.1B

in cash receipts
(as of 2018)



LEADING NEW JERSEY AGRICULTURE SECTORS

\$367M

in fruit and vegetables

\$355.7M

in nursery/
greenhouse/sod

\$93.3M

in field crops

\$65.7M

in poultry and eggs

\$46M

in equine

\$22M

in dairy

JERSEY FRESH